

C A B I N E T S
B Y **hayley**



2022 CATALOGUE **HC SERIES**

hayley

In 2004, Cabinets by Hayley was founded out of the need for better. Through their racing routes; a tougher, stronger and better-looking cabinet was not only a need, but a necessity. With over 40 years of experience in the oil and gas sector providing some of the industries leading electronic equipment and industrial cabinetry, it was an easy addition to create some of the finest garage cabinets the market had ever seen. Whether it was getting to the race track after long nights getting ready, or the perfect centerpiece to compliment your man cave, the challenge was to achieve both. The focus became on a product that not only looked spectacular, but could also withstand the test of time.



After over 15 years in the business and 3 generations of Hayley's, the need became a reality as Cabinets by Hayley has become a household name amongst the rough and tumble working garage to the luxury showroom. They have prided themselves on their family owned service and design expertise while continually evolving in the market with the latest and greatest trends and wants. With now over one thousand parts, and countless man hours into the details, Cabinets by Hayley can say that they have the tools and experience to create the

MORE THAN STORAGE. IT'S AN INVESTMENT

DURABLE FINISH

All cabinets are powder coated with a durable textured finish that resists fingerprints and scuffing.



DESIGN

Strength and beauty go hand in hand with double sided doors and brushed aluminum accents providing a spectacular appearance and superior performance.

NORTH AMERICAN MADE

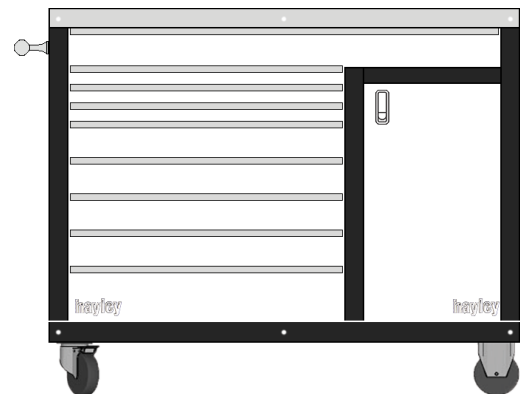
Proudly designed, fabricated, powder coated, and assembled in North America. You can be assured that our quality products will stand the test of time.

STRENGTH

Our Cabinets are manufactured using 16 gauge high quality Canadian steel for a solid feel and ultimate durability that will last a lifetime.

FLEXIBILITY

All of our cabinets are modular in design and are available in a variety of heights, widths, and depths enabling designs to create functional spaces.

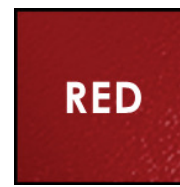
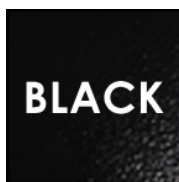


VERSATILE

We have two lines of cabinets and a variety of specialty products to utilize your available space efficiently.

COLORS

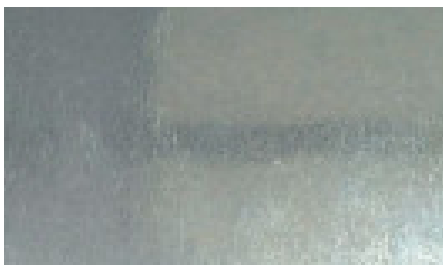
We offer nine popular colour options. All of our cabinets are powder coated to create a scratch resistant and easy to clean surface for years of maintenance free service.



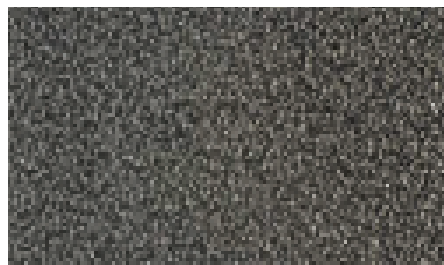
*Optional colours available upon request

COUNTERTOP MATERIAL

Your choice of galvanized 12g steel, powder coated 12g steel, or 16g stainless steel countertops can be installed on your cabinet set.



Galvanized 12g Steel



Powder Coated 12g Steel



16g Stainless Steel

CABINETS
BY **hayley**



H C
SERIES

HC SERIES PREMIUM GARAGE CABINETS



- 100% modular for expandability
- Built-In or Free-Standing options
- Constructed from 16GA steel
- Durable double-sided doors
- Stainless steel full-length hinges
- Chrome or black latches; lock or non-lock
- 130lb full extension ball bearing slides
- Height adjustable shelves
- Adjustable base-channel or free-standing legs
- Fully integrated lighting and switch
- Durable textured powder coated finish
- Available in nine standard colors
- Custom colors available
- Integrated power and USB options
- Counter and backsplash options



19" UPPER SINGLE DOOR

PART #	HEIGHT	WIDTH	DEPTH	WEIGHT
HC 181914	18"	19"	14"	35LBS
HC 241914	24"	19"	14"	40LBS
HC 301914 U	30"	19"	14"	50LBS

HC 181924	18"	19"	24.5"	50LBS
HC 241924	24"	19"	24.5"	65LBS
HC 301924 U	30"	19"	24.5"	70LBS



28" UPPER STANDARD

PART #	HEIGHT	WIDTH	DEPTH	WEIGHT
HC 182814	18"	28"	14"	50LBS
HC 242814	24"	28"	14"	70LBS
HC 302814 U	30"	28"	14"	85LBS

HC 182824	18"	28"	24.5"	90LBS
HC 242824	24"	28"	24.5"	125LBS
HC 302824 U	30"	28"	24.5"	140LBS



34" UPPER STANDARD

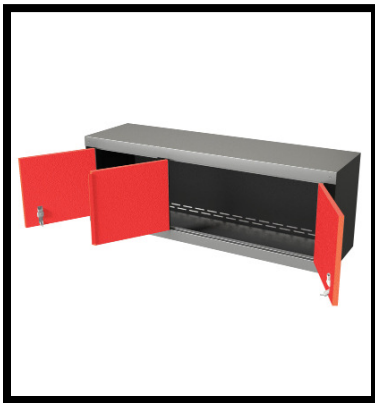
PART #	HEIGHT	WIDTH	DEPTH	WEIGHT
HC 183414	18"	34"	14"	55LBS
HC 243414	24"	34"	14"	75LBS
HC 303414 U	30"	34"	14"	90LBS

HC 183424	18"	34"	24.5"	95LBS
HC 243424	24"	34"	24.5"	130LBS
HC 303424 U	30"	34"	24.5"	155LBS



48" UPPER DOUBLE DOOR

PART #	HEIGHT	WIDTH	DEPTH	WEIGHT
<i>HC 184814</i>	18"	48"	14"	80LBS
<i>HC 244814</i>	24"	48"	14"	110LBS
<i>HC 304814 U</i>	30"	48"	14"	150LBS
<i>HC 184824</i>	18"	48"	24.5"	110LBS
<i>HC 244824</i>	24"	48"	24.5"	190LBS
<i>HC 304824 U</i>	30"	48"	24.5"	240LBS



51" UPPER TRIPLE DOOR

PART #	HEIGHT	WIDTH	DEPTH	WEIGHT
<i>HC 185114</i>	18"	51"	14"	90LBS
<i>HC 245114</i>	24"	51"	14"	120LBS
<i>HC 305114 U</i>	30"	51"	14"	150LBS
<i>HC 185124</i>	18"	51"	24.5"	120LBS
<i>HC 245124</i>	24"	51"	24.5"	150LBS
<i>HC 305124 U</i>	30"	51"	24.5"	180LBS



54" UPPER QUAD DOOR

PART #	HEIGHT	WIDTH	DEPTH	WEIGHT
<i>HC 185424</i>	18"	54"	24.5"	130LBS
<i>HC 245424</i>	24"	54"	24.5"	160LBS

*To go on top of 54" closet



66" UPPER QUAD DOOR

PART #	HEIGHT	WIDTH	DEPTH	WEIGHT
<i>HC 186624</i>	18"	66"	24.5"	130LBS
<i>HC 246624</i>	24"	66"	24.5"	160LBS

*To go on top of 66" closet



19" LOWER STANDARD

PART #	HEIGHT	WIDTH	DEPTH	WEIGHT
<i>HC 301924*</i>	30"	19"	24.5"	75LBS

*Base channel and countertop not included.
Cabinet available in left and right hand door swing.



19" LOWER SINGLE DRAWER

PART #	HEIGHT	WIDTH	DEPTH	WEIGHT
<i>HC 301924 D1*</i>	30"	19"	24.5"	95LBS

*Base channel and countertop not included.
Cabinet available in left and right hand door swing.



19" LOWER DOUBLE DRAWER

PART #	HEIGHT	WIDTH	DEPTH	WEIGHT
<i>HC 301924 D2*</i>	30"	19"	24.5"	125LBS

*Base channel and countertop not included.
Cabinet available in left and right hand door swing.



28" LOWER STANDARD

PART #	HEIGHT	WIDTH	DEPTH	WEIGHT
HC 302824*	30"	28"	24.5"	120LBS

*Base channel and countertop not included.



28" LOWER SINGLE DRAWER

PART #	HEIGHT	WIDTH	DEPTH	WEIGHT
HC 302824 D1*	30"	28"	24.5"	150LBS

*Base channel and countertop not included.



28" LOWER DOUBLE DRAWER

PART #	HEIGHT	WIDTH	DEPTH	WEIGHT
HC 302824 D2*	30"	28"	24.5"	160LBS

*Base channel and countertop not included.



34" LOWER STANDARD

PART #	HEIGHT	WIDTH	DEPTH	WEIGHT
HC 303424*	30"	34"	24.5"	125LBS

*Base channel and countertop not included.



34" LOWER SINGLE DRAWER

PART #	HEIGHT	WIDTH	DEPTH	WEIGHT
HC 303424 D1*	30"	34"	24.5"	155LBS

*Base channel and countertop not included.



34" LOWER DOUBLE DRAWER

PART #	HEIGHT	WIDTH	DEPTH	WEIGHT
HC 303424 D2*	30"	34"	24.5"	165LBS

*Base channel and countertop not included.

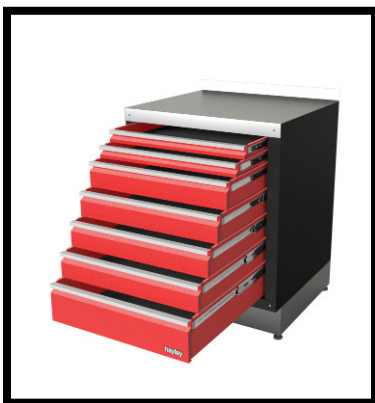


19" TOOL CHEST

PART #	HEIGHT	WIDTH	DEPTH	WEIGHT
HC 301924 D6*	30"	19"	24.5"	225LBS

*Base channel and countertop not included.

*Six Drawer Configuration: 2x2" ~ 3x4" ~ 1x10"

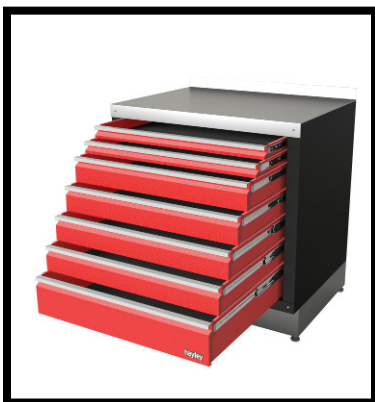


28" TOOL CHEST

PART #	HEIGHT	WIDTH	DEPTH	WEIGHT
HC 302824 D7*	30"	28"	24.5"	250LBS

*Base channel and countertop not included.

*Seven Drawer Configuration: 2x2" ~ 4x4" ~ 1x6"

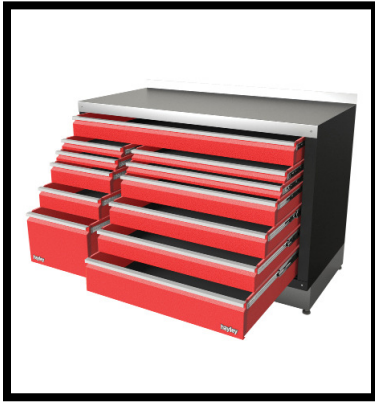


34" TOOL CHEST

PART #	HEIGHT	WIDTH	DEPTH	WEIGHT
HC 303424 D7*	30"	34"	24.5"	260LBS

*Base channel and countertop not included.

*Seven Drawer Configuration: 2x2" ~ 4x4" ~ 1x6"



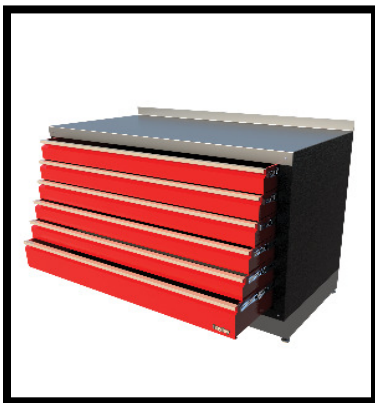
51" TOOL CHEST

PART #	HEIGHT	WIDTH	DEPTH	WEIGHT
HC 305124 D12x	30"	51"	24.5"	420LBS
HC 365124 D16xx	36"	51"	24.5"	600LBS

*Base channel and countertop not included.

xTwelve Drawer Configuration: TOP: 1x4"
LEFT: 2x2" ~ 2x4" ~ 1x10" RIGHT: 2x2" ~ 3x4" ~ 1x6"

xxSixteen Drawer Configuration: TOP: 1x4"
LEFT: 3x2" ~ 3x4" ~ 1x10" RIGHT: 3x2" ~ 4x4" ~ 1x6"



51" TOOL CHEST

PART #	HEIGHT	WIDTH	DEPTH	WEIGHT
HC 305124 D6x	30"	51"	24.5"	350LBS

*Base channel and countertop not included.

xSix Drawer Configuration: 5x4" ~ 1x6"



51" TALL TOOL CHEST

PART #	HEIGHT	WIDTH	DEPTH	WEIGHT
HC 512824 D10x	51"	28"	24.5"	360LBS
HC 513424 D10x	51"	34"	24.5"	390LBS

*Base channel and countertop not included.

xTen Drawer Configuration: 2x2" ~ 4x4" ~ 3x6" ~ 1x10"



19" SINGLE DRAWER GARBAGE BIN

PART #	HEIGHT	WIDTH	DEPTH	WEIGHT
<i>HC 301924 GB</i>	30"	19"	24.5"	95LBS

*Base channel and countertop not included.

*Comes with: 2- black garbage bins



19" SINGLE DRAWER PARTS BIN

PART #	HEIGHT	WIDTH	DEPTH	WEIGHT
<i>HC 301924 PB</i>	30"	19"	24.5"	125LBS

*Base channel and countertop not included.

*Comes with: 20- Small poly bins (5")

20- Large poly bins (7")



19" UTILITY CABINET

PART #	HEIGHT	WIDTH	DEPTH	WEIGHT
<i>HC 301924 UT</i>	30"	19"	24.5"	125LBS

*Base channel and countertop not included.

*Comes with: 6P: Six outlets with convenience

19" SINGLE DRAWER HOSE REEL



PART #	HEIGHT	WIDTH	DEPTH	WEIGHT
<i>HC 301924 HR</i>	30"	19"	24.5"	130LBS
<i>HC 301924 HRHD</i>	30"	19"	24.5"	140LBS

*Base channel and countertop not included.

19" SINGLE DRAWER POWER REEL



PART #	HEIGHT	WIDTH	DEPTH	WEIGHT
<i>HC 301924 PRHD</i>	30"	19"	24.5"	150BS

*Base channel and countertop not included.

28" SINGLE DRAWER HOSE AND POWER REEL



PART #	HEIGHT	WIDTH	DEPTH	WEIGHT
<i>HC 302824 HPRHD</i>	30"	28"	24.5"	225LBS

*Base channel and countertop not included.



28" LOWER UTILITY CABINET

PART #	HEIGHT	WIDTH	DEPTH	WEIGHT
<i>HC 362824 FSD</i>	36"	28"	24.5"	115LBS

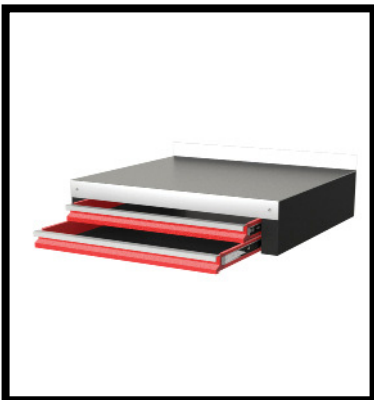
*Countertop not included.



28" LOWER FRIDGE CABINET

PART #	HEIGHT	WIDTH	DEPTH	WEIGHT
<i>HC 362824 FS</i>	36"	28"	24.5"	95LBS

*Countertop not included.



KNEE SPACE DRAWER

PART #	HEIGHT	WIDTH	DEPTH	WEIGHT
<i>HC 62824 D1</i>	6"	28"	24.5"	50LBS
<i>HC 62824 D2</i>	6"	28"	24.5"	60LBS
<i>HC 63424 D1</i>	6"	34"	24.5"	50LBS
<i>HC 63424 D2</i>	6"	34"	24.5"	60LBS

*Countertop not included.



FALSE FRONT SINK CABINET

PART #	HEIGHT	WIDTH	DEPTH	WEIGHT
<i>HC 302824 FF</i>	30"	28"	24.5"	130LBS
<i>HC 303424 FF</i>	30"	34"	24.5"	135LBS

*Countertop not included.



68" MOTORIZED TV CABINET

PART #	HEIGHT	WIDTH	DEPTH	WEIGHT
<i>HC 306810TV</i>	30"	68"	10"	400LBS

*Base channel and countertop not included.

*Requires 2- HC 303414 in front



68" MOTORIZED BAR CABINET

PART #	HEIGHT	WIDTH	DEPTH	WEIGHT
<i>HC 306810 BAR</i>	30"	68"	10"	400LBS

*Base channel and countertop not included.

*Requires 2- HC 303414 in front



19" CLOSET

PART #	HEIGHT	WIDTH	DEPTH	WEIGHT
HC 751914	75"	19"	14"	180LBS
HC 751924	75"	19"	24.5"	230LBS

*Base channel not included.



28" CLOSET

PART #	HEIGHT	WIDTH	DEPTH	WEIGHT
HC 752814	75"	28"	14"	200LBS
HC 752824	75"	28"	24.5"	250LBS

*Base channel not included.



34" CLOSET

PART #	HEIGHT	WIDTH	DEPTH	WEIGHT
HC 753414	75"	34"	14"	210LBS
HC 753424	75"	34"	24.5"	260LBS

*Base channel not included.



DOUBLE DOOR CLOSETS

PART #	HEIGHT	WIDTH	DEPTH	WEIGHT
HC 754814	75"	48"	14"	290lbs
HC 754824	75"	48"	24.5"	340lbs
HC 755414	75"	54"	14"	340lbs
HC 755424	75"	54"	24.5"	390lbs
HC 756614	75"	66"	14"	475lbs
HC 756624	75"	66"	24.5"	525lbs

*Base channel not included.



UPPER CORNER

PART #	HEIGHT	WIDTH	DEPTH	WEIGHT
<i>HC 182424 C</i>	18"	24.5"	24.5"	75LBS
<i>HC 242424 C</i>	24"	24.5"	24.5"	90LBS
<i>HC 302424 C</i>	30"	24.5"	24.5"	110LBS



UPPER CORNER DOUBLE DOOR

PART #	HEIGHT	WIDTH	DEPTH	WEIGHT
<i>HC 183737</i>	18"	37.25"	37.25"	220LBS
<i>HC 243737</i>	24"	37.25"	37.25"	240LBS
<i>HC 303737 U</i>	30"	37.25"	37.25"	300LBS



LOWER CORNER CABINET

PART #	HEIGHT	WIDTH	DEPTH	WEIGHT
<i>HC 303737</i>	30"	37.25"	37.25"	300LBS

*Base channel and countertop not included.



OPEN CORNER DOOR BRACKET KIT

PART #	HEIGHT	WIDTH	DEPTH	WEIGHT
<i>HC 362824 OC</i>	36"	28"	24.5"	175LBS

*Countertop not included.

*Hinged side must be beside the corner.

*Countertop that covers the cabinet must run into the corner.

*Some assembly required



52" BLIND CORNER LOWER

PART #	HEIGHT	WIDTH	DEPTH	WEIGHT
<i>HC 305224 BCL</i>	30"	52.5"	24.5"	190LBS
<i>HC 305224 BCR</i>	30"	52.5"	24.5"	190LBS

- *Base channel and countertop not included.
- *Blind Corner Left: Shown
- *Blind Corner Right: Optional



58" BLIND CORNER LOWER

PART #	HEIGHT	WIDTH	DEPTH	WEIGHT
<i>HC 305824 BCL</i>	30"	58.5"	24.5"	215LBS
<i>HC 305824 BCR</i>	30"	58.5"	24.5"	215LBS

- *Base channel and countertop not included.
- *Blind Corner Left: Shown
- *Blind Corner Right: Optional



52" BLIND CORNER CLOSET

PART #	HEIGHT	WIDTH	DEPTH	WEIGHT
<i>HC 755224 BCL</i>	75"	52.5"	24.5"	475LBS
<i>HC 755224 BCR</i>	75"	52.5"	24.5"	475LBS

- *Base channel and not included.
- *Blind Corner Left: Shown
- *Blind Corner Right: Optional



58" BLIND CORNER CLOSET

PART #	HEIGHT	WIDTH	DEPTH	WEIGHT
<i>HC 755824 BCL</i>	75"	58.5"	24.5"	530LBS
<i>HC 755824 BCR</i>	75"	58.5"	24.5"	530LBS

- *Base channel not included.
- *Blind Corner Left: Shown
- *Blind Corner Right: Optional

52" BLIND CORNER UPPER



PART #	HEIGHT	WIDTH	DEPTH	WEIGHT
<i>HC 185224 BCL</i>	18"	52.5"	24.5"	190LBS
<i>HC 185224 BCR</i>	18"	52.5"	24.5"	190LBS

*Blind Corner Left: Shown
 *Blind Corner Right: Optional

58" BLIND CORNER UPPER



PART #	HEIGHT	WIDTH	DEPTH	WEIGHT
<i>HC 185824 BCL</i>	18"	58.5"	24.5"	215LBS
<i>HC 185824 BCR</i>	18"	58.5"	24.5"	215LBS

*Blind Corner Left: Shown
 *Blind Corner Right: Optional

CABINETS HC STANDARD ROLLING CABINETS



TOOL CART

PART #	HEIGHT	WIDTH	DEPTH	WEIGHT
<i>TC 363424 D1</i>	36"	34"	24.5"	125LBS
<i>TC 363424 D2</i>	36"	34"	24.5"	135LBS

*Price includes:

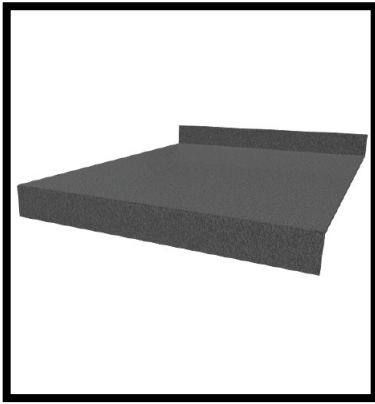
- Casters
- Hayley Tool Rack
- Hayley Screwdriver Rack
- Counter not required

Turn any HC lower into a rolling cabinet by adding four heavy duty castors and a handle.



We provide chrome pull handles and two swivel and two rigid castors. Each castor is capable of supporting 300lbs and each base is made to order, with holes spaced to perfectly balance the unit on the castors.

PART #	HEIGHT	WIDTH	DEPTH	WEIGHT
<i>HC 105</i>				50LBS



COUNTER TOPS

PART #	HEIGHT	WIDTH	DEPTH	WEIGHT
<i>HC 098 GA</i>	2 5/8" Lip	/foot	24.5"	12.5LBS
<i>HC 098 PC</i>	2 5/8" Lip	/foot	24.5"	12.5LBS
<i>HC 098 SS</i>	2 5/8" Lip	/foot	24.5"	18LBS

*Price per linear foot.

GA: galvanized steel with plywood

PC: powder coated with plywood

SS: stainless steel with plywood



6" BASE CHANNEL

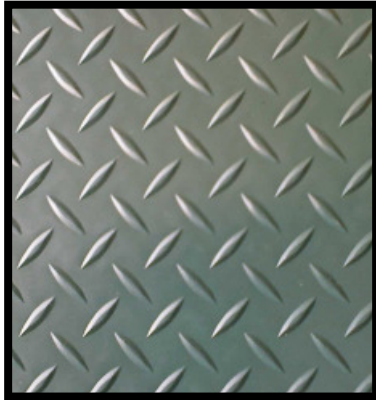
PART #	HEIGHT	WIDTH	DEPTH	WEIGHT
<i>HC 049</i>	6"	/foot	22"	9LBS

*Price per linear foot.



6" FREE-STANDING LEGS, EACH

PART #	HEIGHT	WIDTH	DEPTH	WEIGHT
<i>HC FSL 14</i>	6"	2"	14"	10LBS
<i>HC FSL 24</i>	6"	2"	24.5"	15LBS

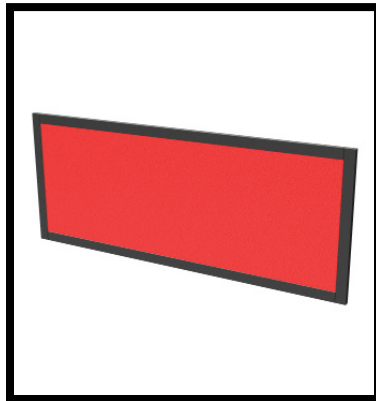


BACKSPLASH

PART #	HEIGHT	WIDTH	DEPTH	WEIGHT
<i>CP 24</i>	24" or less	/foot	1/8"	2LBS
<i>CP 48</i>	24" or more	/foot	1/8"	4LBS

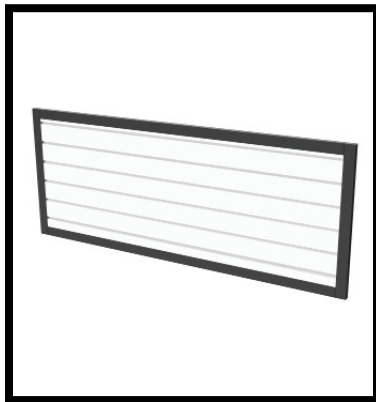
*Price per linear foot.

* Max length is 10'



FREE-STANDING BACKSPLASH

PART #	HEIGHT	WIDTH	DEPTH	WEIGHT
<i>HC FSBS 21 PC</i>	20.75"	MAX 56"	0.75"	30LBS
<i>HC FSBS 21 CP</i>	20.75"	MAX 56"	0.75"	30LBS
<i>HC FSBS 21 CP PC</i>	20.75"	MAX 56"	0.75"	30LBS
<i>HC FSBS 21 HW</i>	20.75"	MAX 56"	0.75"	30LBS
<i>HC FSBS 21 SS</i>	20.75"	MAX 56"	0.75"	40LBS
<i>HC FSBS 21 BL</i>	20.75"	MAX 56"	0.75"	30LBS
<i>HC FSBS 27 PC</i>	26.75"	MAX 56"	0.75"	35LBS
<i>HC FSBS 27 CP</i>	26.75"	MAX 56"	0.75"	35LBS
<i>HC FSBS 27 CP PC</i>	26.75"	MAX 56"	0.75"	35LBS
<i>HC FSBS 27 HW</i>	26.75"	MAX 56"	0.75"	35LBS
<i>HC FSBS 27 SS</i>	26.75"	MAX 56"	0.75"	45LBS
<i>HC FSBS 27 BL</i>	26.75"	MAX 56"	0.75"	35LBS



*PC: Powder coated

*CP: Checker plate

*CP PC: Powder coated checker plate

*HW: Slatwall

*SS: Stainless steel

*BL: Backlit



FREE-STANDING PILLAR

PART #	Power	Height	Width	Depth	WEIGHT
<i>HC FSP 21</i>	no	20.75"	8"	8"	10LBS
<i>HC FSP 27</i>	no	26.75"	8"	8"	12.5LBS
<i>2P*</i>	yes*				5LBS
<i>3P*</i>	yes*				5LBS

Optional Pillar Power Upgrade.

* 2P: Two outlets with convenience

* 3P: Three outlets with two USB and convenience



FREE-STANDING CABINET

PART #	Power	Height	Width	Depth	WEIGHT
<i>HC 212808</i>	no	20.75"	28"	10"	15LBS
<i>HC 213408</i>	no	20.75"	34"	12.5"	20LBS
<i>6P*</i>	yes*				5LBS

Optional Cabinet Power Upgrade.

* 6P: Six outlets with convenience



LATCHES

PART #	Color	Lockable
<i>Chrome Non-Lock</i>	Zinc	No
<i>Chrome Lock</i>	Zinc	Yes
<i>Black Non-Lock</i>	Flat Black	No
<i>Black Lock</i>	Flat Black	Yes

*Price upgrade per latch.

TOE KICK COVERS

PART #	HEIGHT	WIDTH	DEPTH	WEIGHT
<i>HC TKC</i>	6"	/foot	16 G	1LBS

*Price per linear foot.



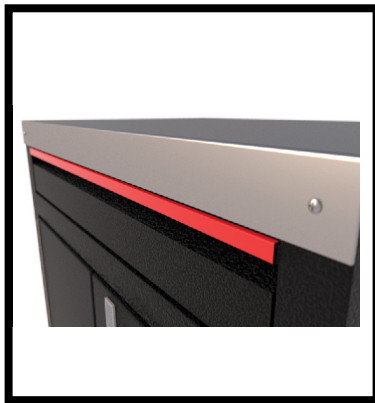
LIGHTING

PART #	HEIGHT	WIDTH	DEPTH	WEIGHT
<i>HC LED</i>	3/8"	/foot	5/16"	1Lbs
<i>HC LED TX</i>				1LBS
<i>HC LED TXHD</i>				1LBS

*Price per linear foot.

*Max 18' of linear cabinets

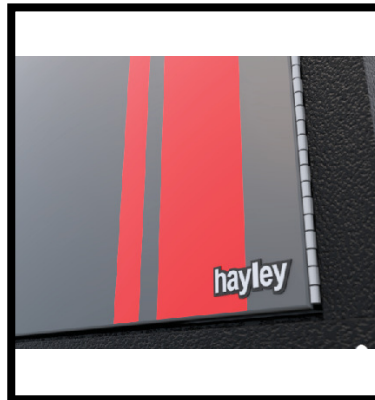
*TXHD used for continuous use applications



POWDER COATED DRAWER TRIM

PART #	COLOR
<i>PC TRIM</i>	ANY

*Price per piece.



STRIPE DECAL

PART #	COLOR
<i>HC DECAL</i>	ANY

*Price per stripe.

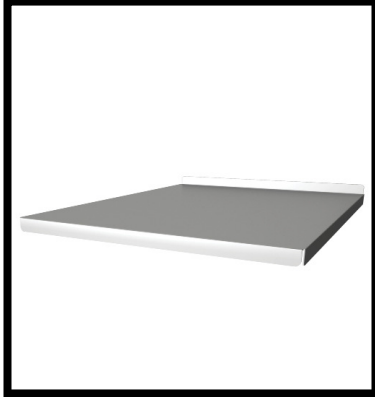


BINS

PART #	HEIGHT	WIDTH	DEPTH	WEIGHT
<i>Small Poly Bin</i>	2.75"	4"	5"	0.1LBS
<i>Large Poly Bin</i>	2.75"	4"	7"	0.1LBS

Bins fit in a 4" tall drawer and priced individually.

SHELVES



PART #	HEIGHT	WIDTH	DEPTH	WEIGHT
HC 189	0.5"	19"	14"	4LBS
HC 132	0.5"	19"	24"	8LBS
HC 338	0.5"	25"	24"	10LBS
HC 085	0.5"	28"	14"	5LBS
HC 036	0.5"	28"	24"	10LBS
HC 010	0.5"	34"	14"	8LBS
HC 014	0.5"	34"	24"	15LBS
HC 150	0.5"	48"	14"	12LBS
HC 117	0.5"	48"	24"	20LBS
HC 375	0.5"	54"	24"	23LBS
HC 370	0.5"	66"	24"	25LBS

Closets come with 2 shelves. Upper & lowers come with 1 shelf.
Eighteen inch uppers and corner cabinets do not have shelves.

PULL-OUT SHELVES



PART #	HEIGHT	WIDTH	DEPTH	WEIGHT
HC 346	0.5"	19"	24"	8LBS
HC 893*	0.5"	24"	24"	10LBS
HC 342	0.5"	28"	24"	12LBS
HC 343	0.5"	34"	24"	15LBS

*Standard textured black
*Used has 48" half pull-out shelf

SHELF HANGER



PART #	HEIGHT	WIDTH	DEPTH	WEIGHT
HC 033	3"	28"		5LBS
HC 034	3"	34"		5LBS
HC 037	3"	48"		10LBS

GA* Galvanized
PC* Powder Coated

CABINETS
BY **hayley**



H C
CONFIGURATIONS

CABINETS

STANDARD CONFIGURATIONS

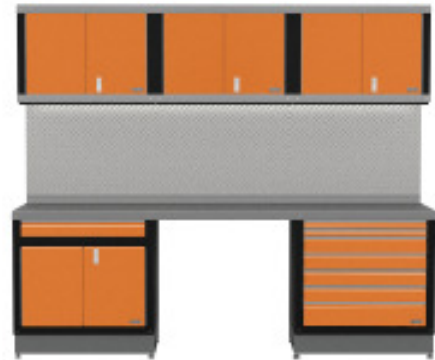
HC CONFIGURATION 1

81" Tall x 68" Wide x 24.5" Deep



HC CONFIGURATION 2

81" Tall x 102" Wide x 24.5" Deep



QUANTITY	PART #	DESCRIPTION
2	HC 243414	med 34" upper
1	HC 303424 D1	34" single drawer
1	HC 30324 D2	34" double drawer
6	CP 24	1/8" alum checker plate <24"
6	HC 098 GA	12 ga galvanized counter /foot
6	HC LED	LED /ft
1	HC LED TX	transformers for LEDs
6	HC 049	base channel /foot

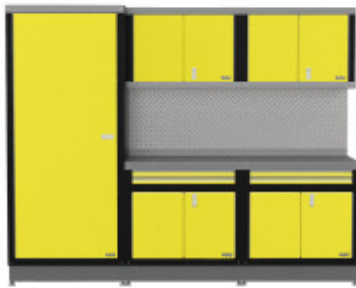
QUANTITY	PART #	DESCRIPTION
3	HC 243414	med 34" upper
1	HC 303424 D1	34" single drawer
1	HC 30324 D7	34" Tool Chest
9	CP 24	1/8" alum checker plate <24"
9	HC 098 GA	12 ga galvanized counter /foot
9	HC LED	LED /ft
1	HC LED TX	transformers for LEDs
6	HC 049	base channel /foot

CABINETS

STANDARD CONFIGURATIONS

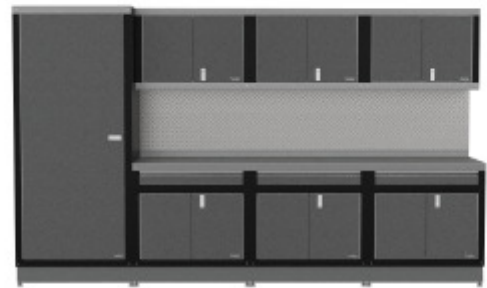
HC CONFIGURATION 3

81" Tall x 102" Wide x 24.5" Deep



HC CONFIGURATION 4

81" Tall x 136" Wide x 24.5" Deep



QUANTITY	PART #	DESCRIPTION
1	HC 753424	34" closet
2	HC 243414	Med 34" Upper
2	HC 30324 D2	34" double drawer
6	CP 24	1/8" alum checker plate <24"
6	HC 098 GA	12 ga galvanized counter /foot
6	HC LED	LED /ft
1	HC LED TX	transformers for LEDs
9	HC 049	base channel /foot

QUANTITY	PART #	DESCRIPTION
1	HC 753424	34" closet
3	HC 243414	Med 34" Upper
3	HC 30324 D1	34" single drawer
9	CP 24	1/8" alum checker plate <24"
9	HC 098 GA	12 ga galvanized counter /foot
9	HC LED	LED /ft
1	HC LED TX	transformers for LEDs
12	HC 049	base channel /foot

CABINETS

STANDARD CONFIGURATIONS

HC CONFIGURATION 5

81" Tall x 170" Wide x 24.5" Deep



HC CONFIGURATION 6

81" Tall x 136" Wide x 24.5" Deep



QUANTITY	PART #	DESCRIPTION
2	HC 753424	34" closet
3	HC 243414	Med 34" upper
2	HC 303424	34" lower
1	HC 303424 D7	34" Tool Chest
9	CP 24	1/8" alum checker plate <24"
9	HC 098 GA	12 ga galvanized counter /foot
9	HC LED	LED /ft
1	HC LED TX	transformers for LEDs
15	HC 049	base channel /foot

QUANTITY	PART #	DESCRIPTION
4	HC 753424	34" closet
12	HC 049	base channel /foot

CABINETS FREESTANDING CONFIGURATIONS

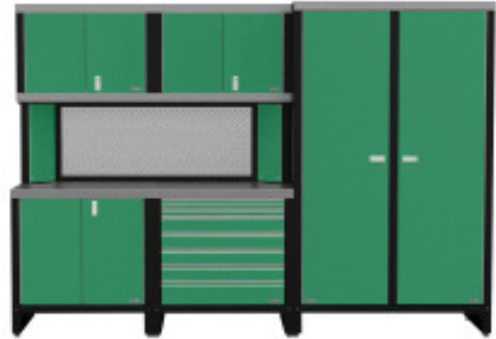
HC FREE STANDING CONFIGURATION 1

81" Tall x 68" Wide x 24.5" Deep



HC FREE STANDING CONFIGURATION 2

81" Tall x 116" Wide x 24.5" Deep



QUANTITY	PART #	DESCRIPTION
2	HC 243414	Med 34" Upper
2	HC 303424	34" Standard Cabinet
4	HC FSL24	Single free standing leg 24.5"
2	HC FSP 21	21" Free standing pillar
1	HC FSBS 21 HW	21" Free standing slatwall backsplash
6	HC LED	LED /ft
1	HC LED TX	transformers for LEDs
6	HC 098 GA	12 ga Galvanized counter /foot

QUANTITY	PART #	DESCRIPTION
2	HC 243414	Med 34" Upper
1	HC 303424 D7	34" Tool Chest
1	HC 303424	34" Standard Cabinet
1	HC 754824	48" Closet Double Door
6	HC FSL 24	Single Free Standing Leg 24.5"
2	HC FSP 21	21" Free Standing Pillar
1	HC FSBS 21 CP	21" Free Standing Checker Plate Backsplash
6	HC LED	LED /ft
1	HC LED TX	Transformer for LED
6	HC 098 GA	12 ga Galvanized Counter /foot

CABINETS FREESTANDING CONFIGURATIONS

HC FREE STANDING CONFIGURATION 3

81" Tall x 72" Wide x 24.5" Deep



HC FREE STANDING CONFIGURATION 4

81" Tall x 136" Wide x 24.5" Deep



QUANTITY	PART #	DESCRIPTION
1	HC 243414	Med 34" Upper
2	HC 241914	Med 19" Upper
1	HC 303424 D7	34" Tool Chest
1	HC 301924 GB	19" Single Drawer Garbage Bin
1	HC 301924 PB	19" Parts Bin
6	HC FSL 24	Single Free Standing Leg 24.5"
2	HC FSP 21	21" Free Standing Pillar
1	HC FSBS 21 HW	21" Free Standing Slatwall Backsplash
6	HC LED	LED /ft
1	HC LED TX	Transformer for LED
6	HC 098 GA	12 ga Galvanized Counter /Foot

QUANTITY	PART #	DESCRIPTION
2	HC 243414	Med 34" Upper
1	HC 303424 D2	34" Double Drawer
1	HC 30324 D7	34" Tool Chest
2	HC 753424	34" CLOset
8	HC FSL24	Single Free Standing Leg 24.5"
2	HC FSP 21	21" Free Standing Pillar
1	HC FSBS 21 CP	21" Free Standing Checker Plate Backsplash
6	HC LED	LED /ft
1	HC LED TX	Transformer for LED
6	HC 098 GA	12 ga Galvanized Counter /foot

CABINETS FREESTANDING CONFIGURATIONS

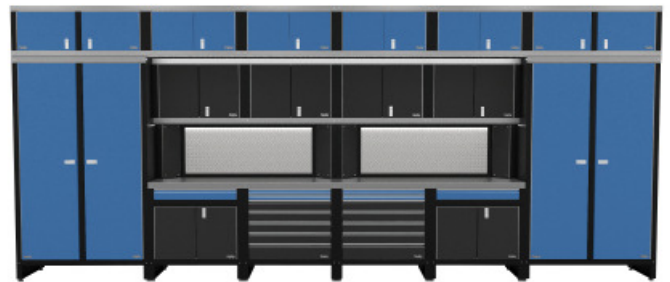
HC FREE STANDING CONFIGURATION 5

81" Tall x 232" Wide x 24.5" Deep



HC FREE STANDING CONFIGURATION 6

99" Tall x 232" Wide x 24.5" Deep



QUANTITY	PART #	DESCRIPTION
4	HC 243414	Med 34" Upper
2	HC 303424 D1	34" Single Drawer
2	HC 303424 D2	34" Double Drawer
2	HC 754824	48" Closet Double Door
12	HC FSL 24	Single Free Standing Leg 24.5"
4	HC FSP 21	21" Free Standing Pillar
2	HC FSBS 21 CP	21" Free Standing Checker Plate Backsplash
12	HC LED	LED /ft
1	HC LED TX	Transformer for LEDs
12	HC 098 GA	12 ga Galvanized Counter /Foot

QUANTITY	PART #	DESCRIPTION
2	HC 184824	Small 48" Deep Upper
4	HC 183424	Small 34" Deep Upper
4	HC 243414	Med 34" Upper
2	HC 303424 D1	34" Single Drawer
2	HC 303424 D7	34" Tool Chest
2	HC 754824	48" Double Door Closet
12	HC FSL24	Single Free Standing Leg 24.5"
4	HC FSP 21	21" Free Standing Pillar
2	HC FSBS 21 CP	21" Free Standing Checker Plate Backsplash
24	HC LED	LED /ft
2	HC LED TX	Transformer for LEDs
12	HC 098 GA	Galvanized Counter

C A B I N E T S
B Y **hayley**

CABINETS BY HAYLEY

7071 112 Ave SE
Calgary, AB, Canada
888-279-4101

WWW.CABINETSBYHAYLEY.COM